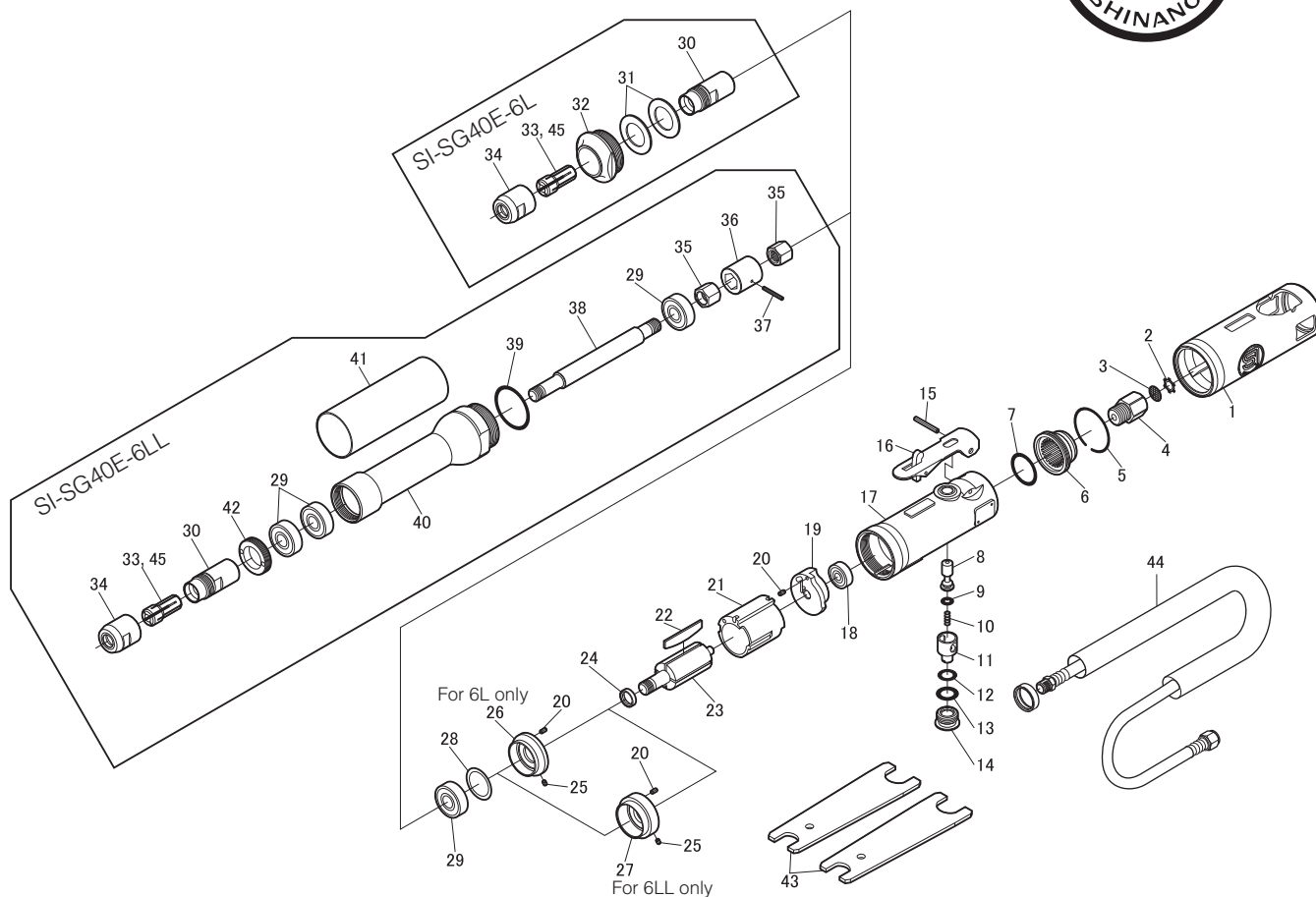


SI-SG40E-6L Die Grinder

SI-SG40E-6LL Extended Die Grinder



Ref. No.	Parts No.	Description	Q'ty	Ref. No.	Parts No.	Description	Q'ty
COMMON PARTS				SI-SG40E-6L			
1	892-2AR	Housing Cover	1	26	620-10	Front Plate	1
2	CRTW-12	Retainer	1	30	892SE-1	Spindle	1
3	680-28A	Screen	1	31	620-20	Washer	2
4	180-1	Inlet Bushing	1	32	892SE-4	Lock Nut	1
5	620-30	Retaining Ring	1	33	892SE-2	6mm Collet	1
6	620-18	Deflector	1	34	892SE-3	Collet Nut	1
7	620-28	O-Ring	1	SI-SG40E-6LL			
8	350-5	Valve Stem	1	27	133-16A	Front Plate	1
9	P-5	O-Ring	1	29	6000ZZ	Ball Bearing	3
10	350-7	Valve Spring	1	30	892SE-1	Spindle	1
11	350-8	Air Regulator	1	33	892SE-2	6mm Collet	1
12	P-8	O-Ring	1	34	892SE-3	Collet Nut	1
13	P-11	O-Ring	1	35	132-16A	Coupling Nut	2
14	350-10	Valve Screw	1	36	132-39	Coupling	1
15	30-24	Roll Pin(3Ø-24mm)	1	37	20-20	Roll Pin(2Ø-20mm)	1
16	350-2L	Throttle Lever	1	38	892LSE-3	Extension Shaft	1
17	892-1	Motor Housing incl. Bush (350-4)	1	39	1019-8	O-Ring	1
18	626ZZ	Ball Bearing	1	40	892LSE-2	Extension Housing	1
19	620-9	Rear Plate	1	41	892LSE-4	Extension Cover	1
20	25-5	Roll Pin(2.5Ø-5mm)	2	42	892LSE-1	Spindle Lock Nut	1
21	680-1A	Cylinder	1	OPTION			
22	350-16	Rotor Blade	4	45	892SE-2A	1/4 Collet	1
23	892SE-5	Rotor	1				
24	350-18	Collar	1				
25	25-3.5	Roll Pin(2.5Ø-3.5mm)	1				
28A	350-20	Shim(0.03mm)	★				
28B	350-29	Shim(0.05mm)	★				
29	6000ZZ	Ball Bearing	1				
43	350-28	Spanner Wrench (14x19mm)	2				
44	106-2MAS	Wipe Hose M Assy	1				